

CITY OF NEW YORK, BOROUGH OF QUEENS  
OFFICE OF THE PRESIDENT  
TOPOGRAPHICAL BUREAU

### MAP NO. 2992

SHOWING  
**A CHANGE IN THE STREET SYSTEM**  
HERETOFORE LAID OUT ON  
**JUSTICE AVENUE**  
FROM BROADWAY TO 52<sup>ND</sup> AVENUE  
AND  
**BROADWAY**  
FROM 51<sup>ST</sup> AVENUE TO QUEENS BOULEVARD,  
IN THE SECOND WARD

NEW YORK, NOV. 5<sup>TH</sup> 1943  
SCALE 1" = 80'

*Thomas H. Cunningham*  
ENGINEER IN CHARGE  
*James A. Burke*  
PRESIDENT OF THE BOROUGH

*Frederic Reich*  
CONSULTING ENGINEER

app by CPC March 8/44 (11)  
app by Bd of E. March 23/44 (83a)

### Note

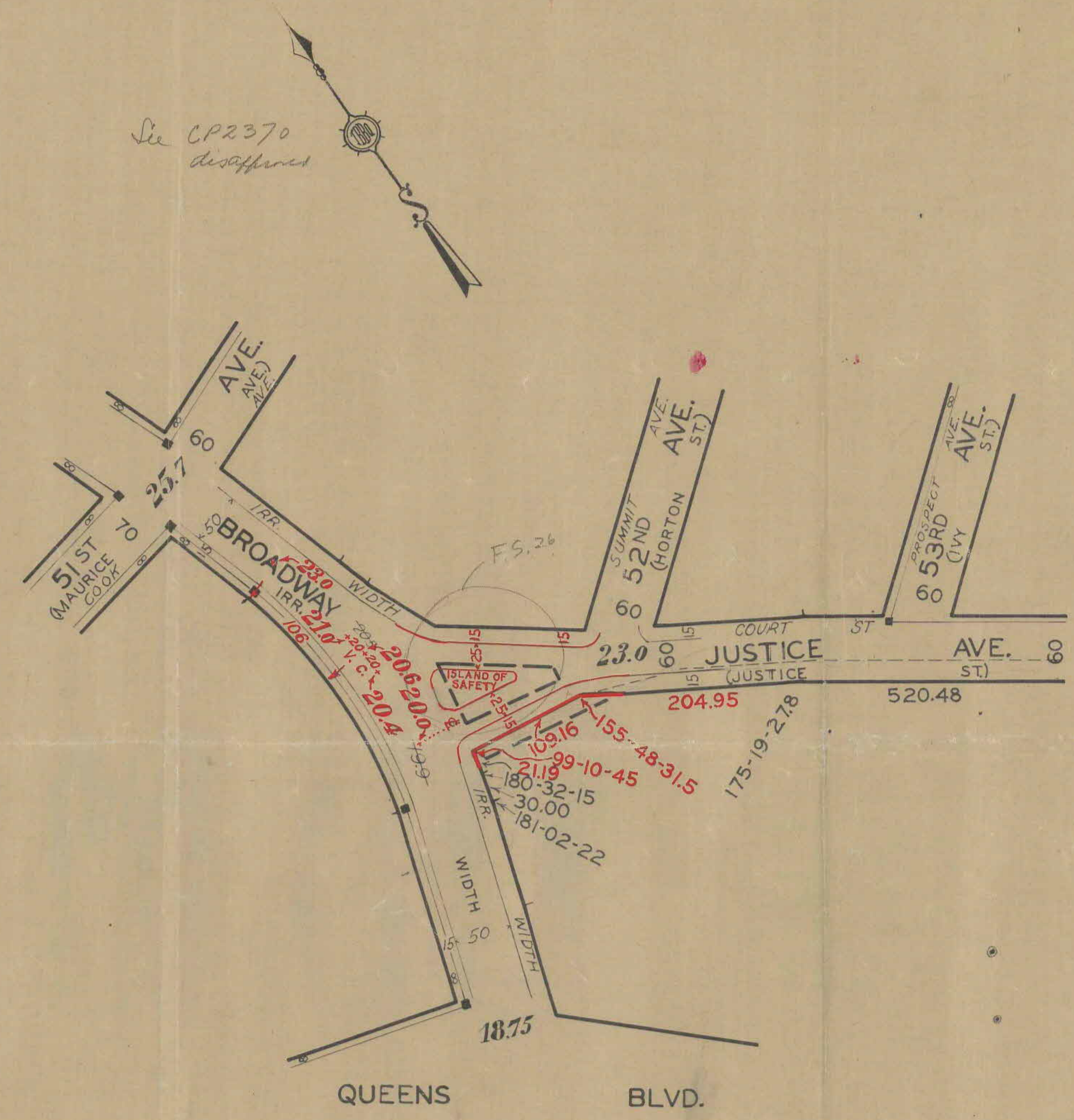
Black lines and figures indicate those heretofore established and retained.  
Red lines and figures hereby established supersede lines and figures heretofore established.  
Street lines heretofore established and hereby eliminated are shown thus: - - - - -  
Fine lines within street areas indicate roadway and sidewalk treatment.  
Monument lines are shown thus: — ■ —  
Grades refer to a datum 2.725' above U. S. Coast & Geodetic Survey datum and apply to intersections of center lines of streets unless otherwise indicated.  
Grades heretofore established and hereby retained are shown thus: 25.7  
Grades hereby established and superseding those heretofore established are shown thus: **20.0**  
Grades heretofore established and hereby abolished are shown thus: 79.9

I, Isaac Eichholz, Acting Secretary of the Board of Estimate of the City of New York, do hereby certify that this map is one of four similar maps adopted by the said Board of Estimate on the 23<sup>RD</sup> day of March 1944

Dated: New York, JUNE 14, 1944.

*Isaac Eichholz*  
Acting Secretary, Board of Estimate

Computed by *RMS & JMS* Drawn by *A.V.H.*  
Compared by *R.M.S.* Comp. by  
Inspected by Color Comp. by



F.S. 26 - App'd by E&A, May 20<sup>th</sup>, 1910

AREA - 21' x 31' = 4.550 FT.



CITY OF NEW YORK, BOROUGH OF QUEENS  
OFFICE OF THE PRESIDENT  
TOPOGRAPHICAL BUREAU

# MAP NO. 2992

SHOWING  
**A CHANGE IN THE STREET SYSTEM**  
HERETOFORE LAID OUT ON  
**JUSTICE AVENUE**  
FROM BROADWAY TO 52<sup>ND</sup> AVENUE  
AND  
**BROADWAY**  
FROM 51<sup>ST</sup> AVENUE TO QUEENS BOULEVARD,  
IN THE SECOND WARD

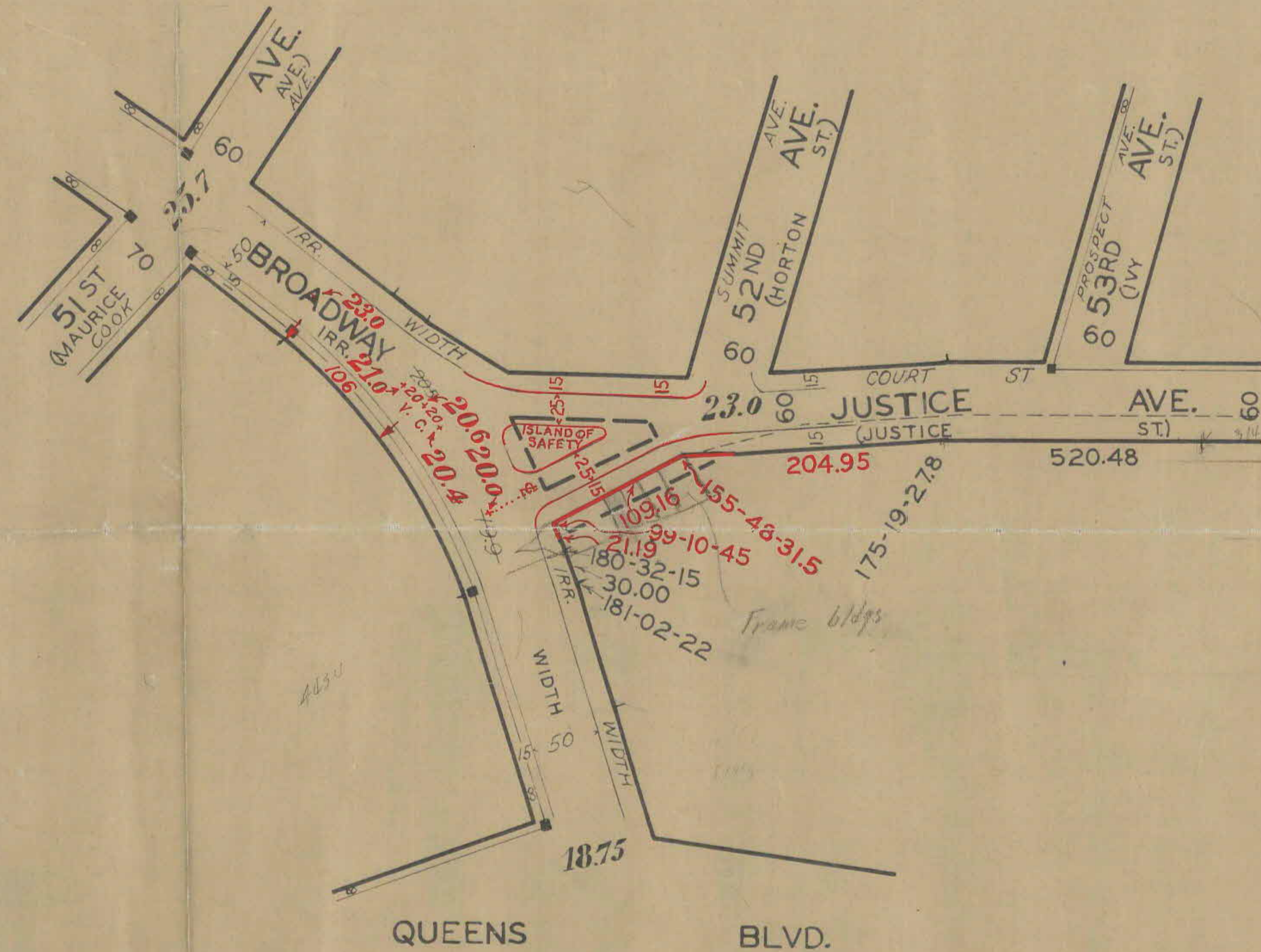
NEW YORK, NOV. 5<sup>TH</sup> 1943

SCALE 1" = 80'

*William Rasch*  
CONSULTING ENGINEER

*Harold Hammingham*  
ENGINEER IN CHARGE

*James A. Burke*  
PRESIDENT OF THE BOROUGH



## Note

Black lines and figures indicate those heretofore established and retained.

Red lines and figures hereby established supersede lines and figures heretofore established.

Street lines heretofore established and hereby eliminated are shown thus: - - - - -

Fine lines within street areas indicate roadway and sidewalk treatment.

Monument lines are shown thus: — ■ —

Grades refer to a datum 2.725' above U. S. Coast & Geodetic Survey datum and apply to intersections of center lines of streets unless otherwise indicated.

Grades heretofore established and hereby retained are shown thus: 25.7

Grades hereby established and superseding those heretofore established are shown thus: 20.0

Grades heretofore established and hereby abolished are shown thus: 79.9

I, Isaac Eichholz, Acting Secretary of the Board of Estimate of the City of New York, do hereby certify that this map is one of four similar maps adopted by the said Board of Estimate on the 23 day of March 1944 #83

Dated: New York, \_\_\_\_\_ 194

Acting Secretary, Board of Estimate

Computed by *R.M.S. J.M.G.* Drawn by *A.V.H.*  
Compared by *R.M.S.* Comp. by \_\_\_\_\_  
Inspected by \_\_\_\_\_ Color Comp. by \_\_\_\_\_

AREA - 2 1/2" x 3 1/2" = 45.50 FT.

97/13