

V-882

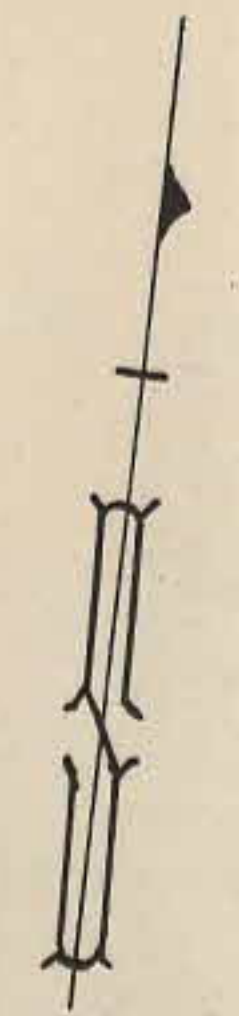
V-882

I, Ruth W. Whaley, Secretary of the Board of Estimate of the City of New York do hereby certify that this map is one of four similar maps adopted by the said Board of Estimate on the 22nd day of MAY 1958.

Dated: New York, JUL 8 1958

Ruth W. Whaley
Secretary Board of Estimate
A.7.

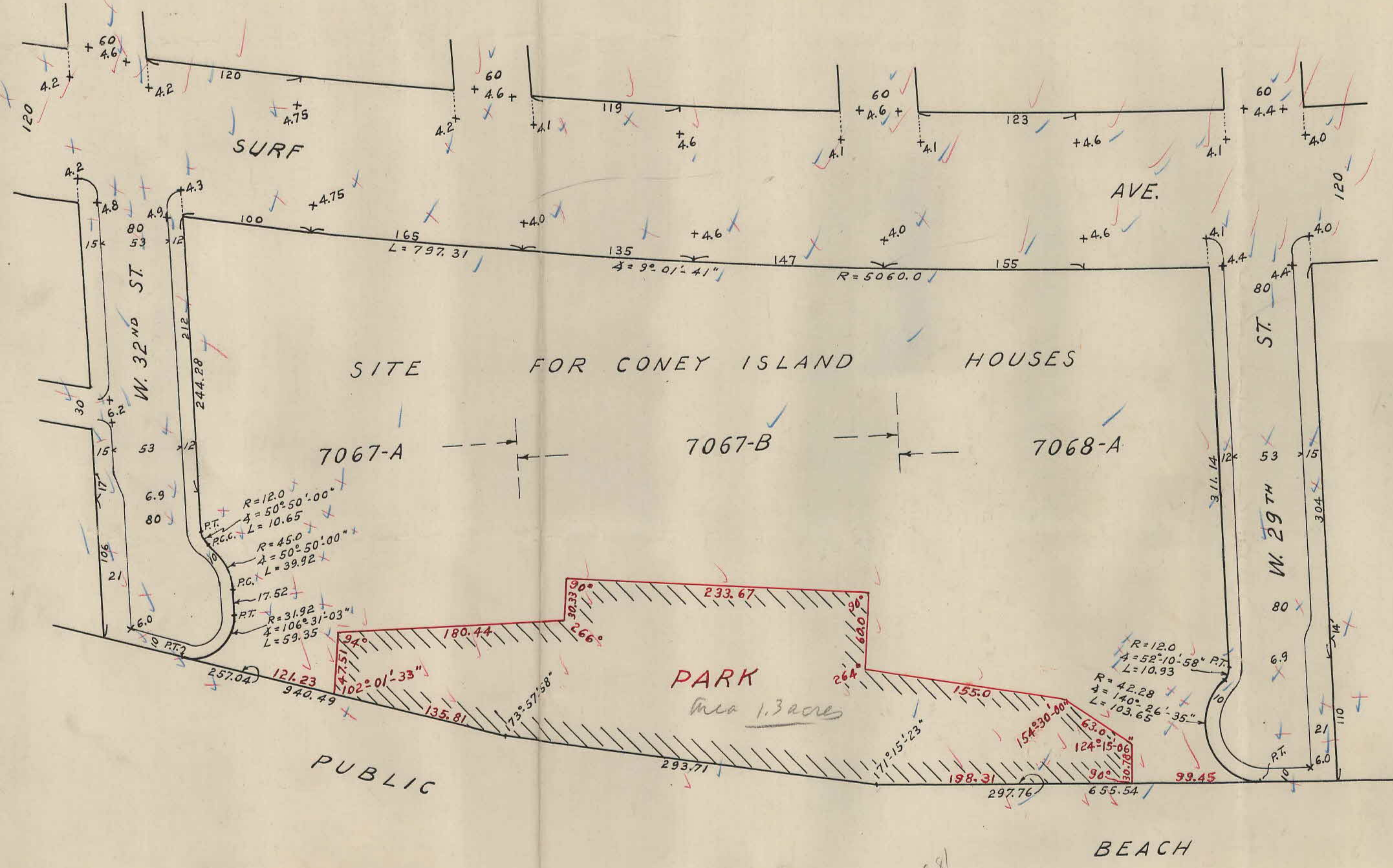
SCALE: 60 FEET TO 1 INCH.



SECTION 21 OF THE KINGS COUNTY LAND MAP

Note:
Solid black lines and figures indicate those heretofore established and retained.
Fine full black lines and figures within street areas indicate surface roadway and sidewalk treatment.
Grades refer to Highway Datum which is 2.56 feet above U.S.C. & G.S. Datum and apply to the top of curb at the curb line intersections and elsewhere at the top of curb on either side, except where otherwise indicated.
The grades between points at which elevations are shown shall be straight lines.
4.0 Indicates grade heretofore established and hereby retained.
PARK Indicates park hereby established.
Park lines coincident with street lines are defined by street lines.
Park lines not coincident with street lines are shown by fine red lines.

V-882



App by CPC Jan 5/55 (21)
App by Bd of E May 22/58 (209)

CITY OF NEW YORK
BOROUGH OF BROOKLYN
OFFICE OF THE PRESIDENT
BUREAU OF HIGHWAYS AND SEWERS
MAP
SHOWING THE LOCATING AND LAYING OUT OF A
PARK
WITHIN THE BLOCK BOUNDED BY
WEST 29TH STREET, PUBLIC BEACH,
WEST 32ND STREET AND SURF AVENUE
GRADES REMAIN AS HERETOFORE ESTABLISHED

DATED: NEW YORK, Sept. 16, 1954.

John Cashmore
PRESIDENT BOROUGH OF BROOKLYN

Charles Riedel
CHIEF ENGINEER

Commissioner of Parks

28

DIVISION OF STREET PLAN RECORDS
APPROVED: Harry H. [Signature]
SENIOR CIVIL ENGINEER IN CHARGE

V-882

V-882

D'W'N BY: F.B.
CH'K'D BY: [Signature]
COMPR'S DIV.: J.G.W.

CP 10794