

NOTES

- INDICATES STREET LINE HERETOFORE ESTABLISHED AND HEREBY RETAINED.
- INDICATES STREET LINE HEREBY ESTABLISHED.
- INDICATES STREET LINE HERETOFORE ESTABLISHED AND HEREBY ELIMINATED.
- 213.92' INDICATES DIMENSION HEREBY ESTABLISHED.
- 94 INDICATES ELEVATION HEREBY ESTABLISHED.
- 110' INDICATES TIE-IN DISTANCES TO ELEVATIONS HEREBY ESTABLISHED.
- INDICATES SIDEWALK AND ROADWAY TREATMENT HEREBY ESTABLISHED OR HERETOFORE ESTABLISHED AND RETAINED.
- 12' INDICATES SIDEWALK AND ROADWAY TREATMENT DIMENSION HEREBY ESTABLISHED.
- INDICATES SIDEWALK EASEMENT HEREBY ESTABLISHED.
- ELEVATIONS ARE FOR TOP OF CURB AND ARE REFERRED TO THE DATUM OF THE TOPOGRAPHICAL BUREAU, BOROUGH OF MANHATTAN WHICH IS 2.75 FEET ABOVE THE U.S.C. & G. DATUM AT SANDY HOOK.
- INDICATES LOT LINE
- INDICATES SEWER, SIDEWALK AND ROADWAY EASEMENT
- LINE "N" SEE SHEET 2 FOR LOCATION AND DIMENSIONS.

CITY OF NEW YORK
OFFICE OF THE PRESIDENT BOROUGH OF MANHATTAN
TOPOGRAPHICAL BUREAU

MAP SHOWING A CHANGE IN THE CITY MAP
BY ELIMINATING AND CHANGING STREET LINES,
AND
BY LAYING OUT THE LINES AND DIMENSIONS OF
SEWER, SIDEWALK AND ROADWAY EASEMENTS
IN THE AREA GENERALLY BOUNDED BY
**PEARL STREET, BROAD STREET,
SOUTH WILLIAM STREET**
AND THE WESTERLY PROPERTY LINE OF LOTS 49 & 22 IN BLOCK 29

DATED DEC. 12, 1979
REVISED: MARCH 5, 1980
AMENDED: OCTOBER 20, 1980

SCALE 1"=30'

Andrew Stein
ANDREW STEIN, PRESIDENT BOROUGH OF MANHATTAN

Anthony C. Gulotta
ANTHONY C. GULOTTA, P.E., DIRECTOR TOPOGRAPHICAL BUREAU

ACC. NO. 30064

I, THEODORE MEEKINS, SECRETARY OF THE
BOARD OF ESTIMATE OF THE CITY OF NEW YORK
DO HEREBY CERTIFY THAT THIS MAP IS ONE OF
SEVEN SIMILAR MAPS ADOPTED BY THE SAID BOARD
OF ESTIMATE ON FEB 26 1981 CAL. 291

DATED: NEW YORK MAY 5 1981

Theodore H. Meekins
SECRETARY, BOARD OF ESTIMATE

DRAWN BY: Y.L.

CHECKED BY: G.S.

G. S. Salas
DEPUTY TOPOGRAPHICAL ENGINEER

SHEET 2 OF 2
ENLARGED PLAN
SEE SHEET 1 FOR LOCATION

NOTE : LINE "N" NOT SHOWN
ON SHEET NO. 1

COLUMNS DELETED
FROM EASEMENT AREA
SEE PLAN FOR LOCATION

SCALE : $\frac{1}{4}" = 10'$

SECTION A-A
LIMITING PLANE OF SIDEWALK EASEMENT

CITY OF NEW YORK
OFFICE OF THE PRESIDENT BOROUGHS OF MANHATTAN
TOPOGRAPHICAL BUREAU

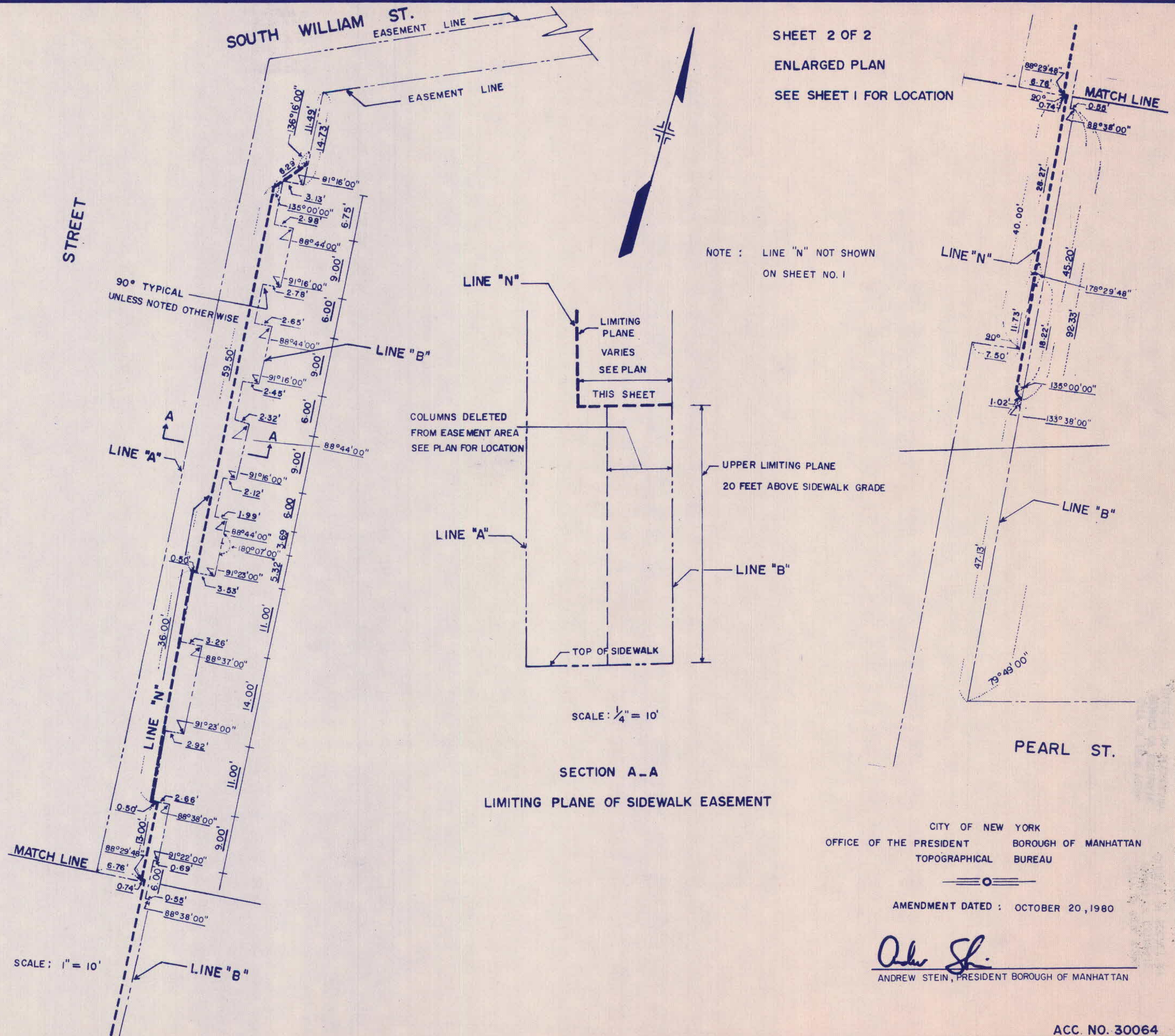
AMENDMENT DATED : OCTOBER 20, 1980

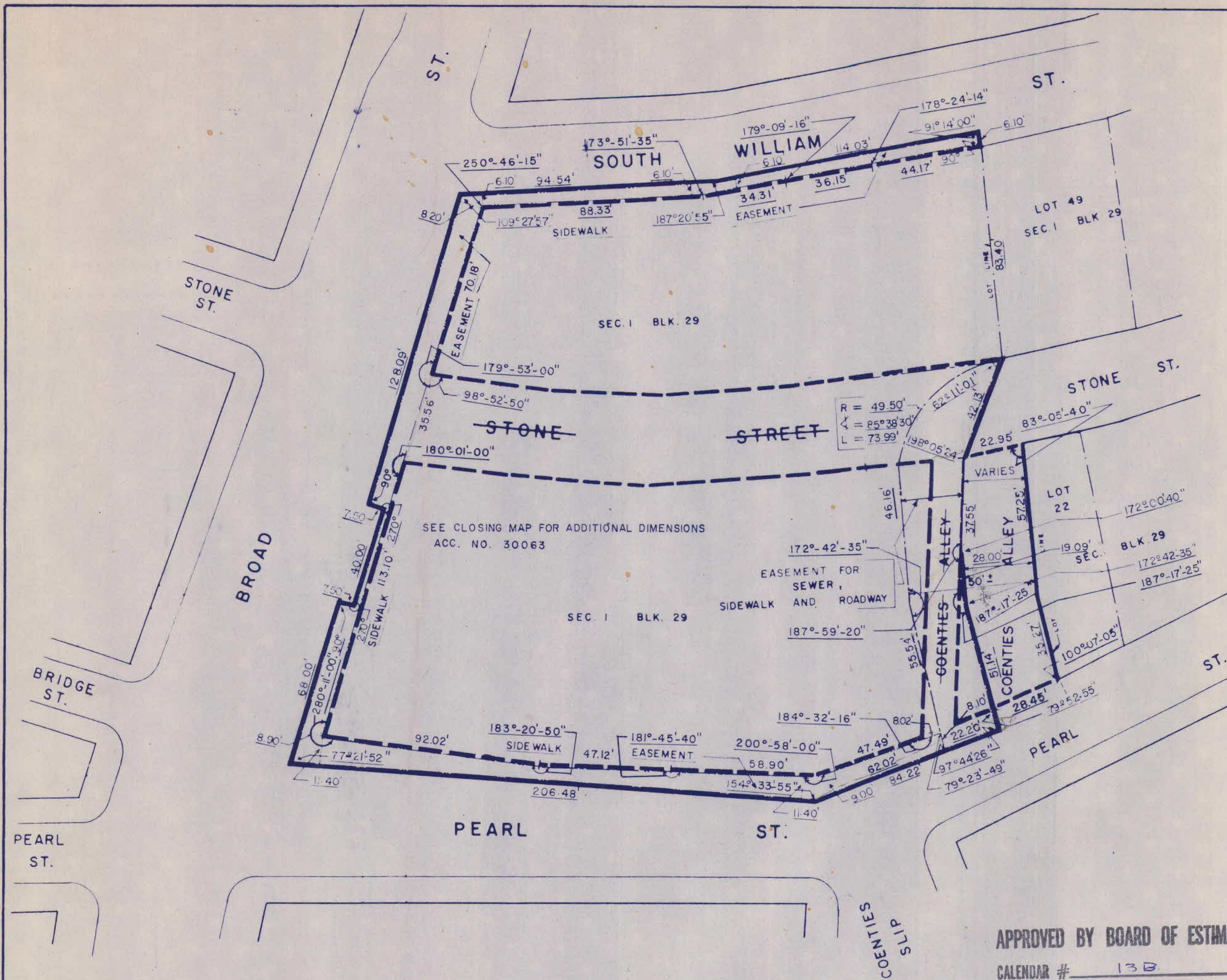
Andrew Stein
ANDREW STEIN, PRESIDENT BOROUGHS OF MANHATTAN

ACC. NO. 30064

Anthony C. Gulotta
ANTHONY C. GULOTTA, P.E., DIRECTOR, TOPOGRAPHICAL BUREAU

DRAWN BY: Y.L.





- NOTES**
- INDICATES STREET LINE HERETOFORE ESTABLISHED AND HEREBY RETAINED.
 - INDICATES STREET LINE HEREBY ESTABLISHED.
 - - - INDICATES STREET LINE HERETOFORE ESTABLISHED AND HEREBY ELIMINATED.
 - 213.92' INDICATES DIMENSION HEREBY ESTABLISHED.
 - 9.4 INDICATES ELEVATION HEREBY ESTABLISHED.
 - 110' INDICATES TIE-IN DISTANCES TO ELEVATIONS HEREBY ESTABLISHED.
 - INDICATES SIDEWALK AND ROADWAY TREATMENT HEREBY ESTABLISHED OR HERETOFORE ESTABLISHED AND RETAINED.
 - 12' INDICATES SIDEWALK AND ROADWAY TREATMENT DIMENSION HEREBY ESTABLISHED.
 - - - INDICATES SIDEWALK EASEMENT HEREBY ESTABLISHED.
 - ELEVATIONS ARE FOR TOP OF CURB AND ARE REFERRED TO THE DATUM OF THE TOPOGRAPHICAL BUREAU, BOROUGH OF MANHATTAN WHICH IS 2.75 FEET ABOVE THE U.S.C. & G. DATUM AT SANDY HOOK.
 - INDICATES LOT LINE.
 - - - INDICATES SEWER, SIDEWALK AND ROADWAY EASEMENT.

CITY OF NEW YORK
OFFICE OF THE PRESIDENT, BOROUGH OF MANHATTAN
TOPOGRAPHICAL BUREAU

MAP SHOWING A CHANGE IN THE CITY MAP
BY ELIMINATING AND CHANGING STREET LINES,
AND
BY LAYING OUT THE LINES AND DIMENSIONS OF
SEWER, SIDEWALK AND ROADWAY EASEMENTS
IN THE AREA GENERALLY BOUNDED BY
**PEARL STREET, BROAD STREET,
SOUTH WILLIAM STREET**
AND THE WESTERLY PROPERTY LINE OF LOTS 49 & 22 IN BLOCK 29

DATED DEC. 12, 1979
REVISED: MARCH 5, 1980

SCALE: 1" = 30'

CITY OF NEW YORK
BOARD OF ESTIMATE
BUREAU OF SECRETARY
RECEIVED JUL 14 1980
REFERRED CALENDAR
R.g. No. 7287 Vol. 147

APPROVED BY BOARD OF ESTIMATE

CALENDAR # 13B

DATE MAY 29, 1980

AMENDED OCT 20, 1980
ADOPTED FEB 26, 1981 (291)

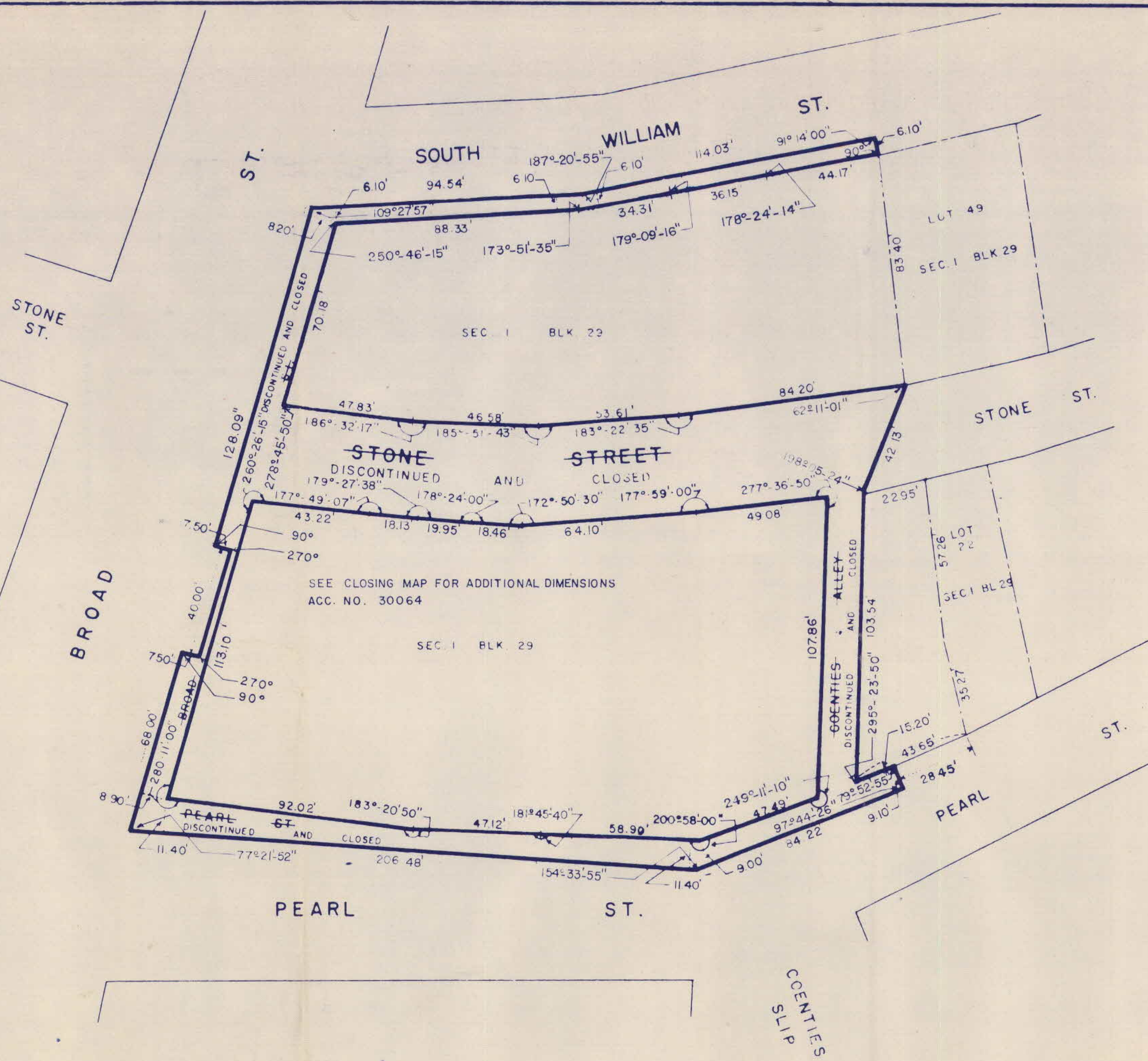
I, THEODORE MEEKINS, SECRETARY OF THE
BOARD OF ESTIMATE OF THE CITY OF NEW YORK
DO HEREBY CERTIFY THAT THIS MAP IS ONE OF
SEVEN SIMILAR MAPS ADOPTED BY THE SAID BOARD
OF ESTIMATE ON MAY 29, 1980 CAL 13B

DATED: NEW YORK July 18, 1980

Paul E. Williamson
SECRETARY, BOARD OF ESTIMATE

DRAWN BY Y.L.
CHECKED BY 45
George S. S. S.
DEPUTY TOPOGRAPHICAL ENGINEER

ACC. NO. 30064



I, THEODORE MEEKINS, SECRETARY OF THE BOARD OF ESTIMATE OF THE CITY OF NEW YORK DO HEREBY CERTIFY THAT THIS MAP IS ONE OF SEVEN SIMILAR MAPS ADOPTED BY THE SAID BOARD OF ESTIMATE ON MAY 29 1980 CAL 130

DATED: NEW YORK July 18 1980
John E. Wilkins
 ACTG. SECRETARY, BOARD OF ESTIMATE PS

NOTE: STREETS TO BE DISCONTINUED AND CLOSED ENCLOSED IN HEAVY BLACK LINES.

APPROVED BY BOARD OF ESTIMATE
 CALENDAR # 130
 DATE MAY 29, 1980

CITY OF NEW YORK
 OFFICE OF THE PRESIDENT BOROUGH OF MANHATTAN
 TOPOGRAPHICAL BUREAU

MAP SHOWING A CHANGE IN THE CITY MAP
 BY DISCONTINUING AND CLOSING
STONE STREET AND COENTIES ALLEY

AND PORTIONS OF
SOUTH WILLIAM, BROAD AND PEARL STREETS
 IN THE AREA GENERALLY BOUNDED BY
**PEARL STREET, BROAD STREET,
 SOUTH WILLIAM STREET**

AND THE WESTERLY PROPERTY LINE OF LOTS 49 & 22 IN BLOCK 29

DATED: DEC. 12, 1979
 REVISED: MARCH 5, 1980
 SCALE 1"=30'

John E. Wilkins
 PRESIDENT BOROUGH OF MANHATTAN
John E. Wilkins PE
 DIRECTOR TOPOGRAPHICAL ENGINEER

DRAWN BY: Y.L.
 CHECKED BY: S.S.
George Seilman
 DEPUTY TOPOGRAPHICAL ENGINEER

ACC. NO. 30063