

LEGEND

- — — — — Indicates street line heretofore established and hereby retained.
- - - - - Indicates street line heretofore established and hereby eliminated.
- — — — — Indicates street line hereby established.
- — — — — Indicates roadway and sidewalk treatment line hereby established or heretofore established and hereby retained.
- — — — — Indicates street and treatments dimensions heretofore established and hereby retained.
- — — — — Indicates dimensions heretofore established and hereby eliminated.
- — — — — Indicates dimensions hereby established.
- — — — — Indicates park dimensions hereby established.
- — — — — Indicates legal grade heretofore established and hereby retained.
- — — — — Indicates existing grade heretofore established and hereby retained.
- — — — — Indicates elevation heretofore established and hereby eliminated.
- — — — — Indicates tie-in distance heretofore established and hereby retained.
- — — — — Indicates tie-in distance hereby established.
- — — — — Indicates tie-in distance heretofore established and hereby eliminated.
- — — — — Indicates tax block number
- — — — — Indicates roadway and sidewalk treatment dimension heretofore established and hereby retained.

PARK

PARK ADDITION

XXXXXXXX

- — — — — Indicates park heretofore established and hereby retained.
 - — — — — Indicates park hereby established.
 - — — — — Indicates park line heretofore established and hereby eliminated.
- Elevations are for top of curb and are referred to the datum of the topographical bureau, borough of Manhattan which is 2.75 feet above the U.S.C. & G.S. datum at Sandy Hook, New Jersey.
- UTILITY CORRIDOR: An area of the park is reserved for Department of Environmental Protection (DEP) utility infrastructure purposes, with a location to be determined pursuant to a memorandum of understanding between DEP and the Department of Parks and Recreation.

I, YVETTE V. RUEL, SECRETARY OF THE CITY PLANNING COMMISSION, DO HEREBY CERTIFY THAT THIS MAP IS ONE OF 8 SIMILAR MAPS AUTHORIZED PURSUANT TO CHAPTER 137 OF THE LAWS OF 2011 AND THAT THIS MAP WAS FILED ON THE DATE OF THIS CERTIFICATION AND WILL TAKE EFFECT ON THE FOLLOWING DAY.

DATE: NEW YORK January 25, 2013

Yvette V. Ruel
SECRETARY, CITY PLANNING COMMISSION

CITY OF NEW YORK
BOROUGH OF MANHATTAN
OFFICE OF THE PRESIDENT
TOPOGRAPHICAL BUREAU

MAP ACC. NO. 30239
SHOWING A CHANGE IN THE CITY MAP

BY ELIMINATING
ASSER LEVY PLACE

BETWEEN EAST 23RD STREET AND EAST 25TH STREET
AND
ESTABLISHING AN ADDITION TO ASSER LEVY PARK

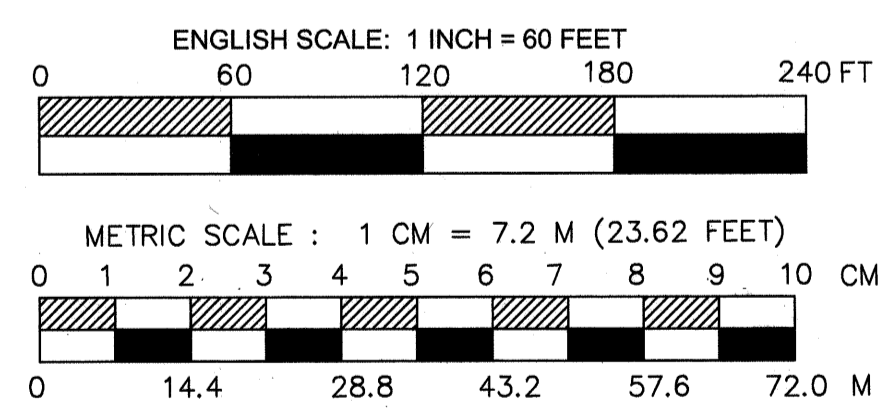
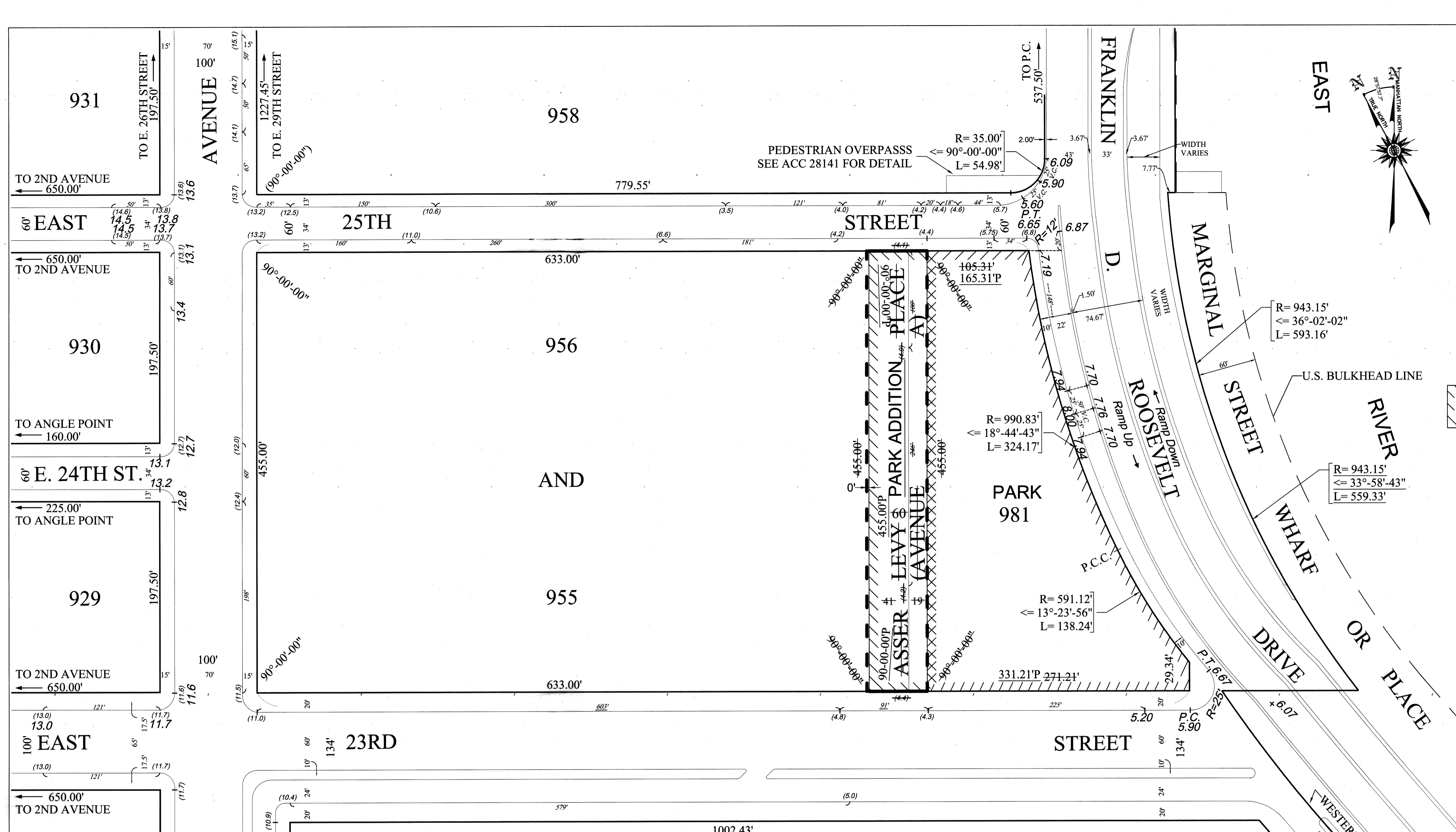
DATE: NOVEMBER 26, 2012

Veronica M. White
VERONICA M. WHITE
COMMISSIONER OF THE
DEPARTMENT OF PARKS AND RECREATION

Scott M. Stringer
SCOTT M. STRINGER
PRESIDENT OF THE BOROUGH OF MANHATTAN

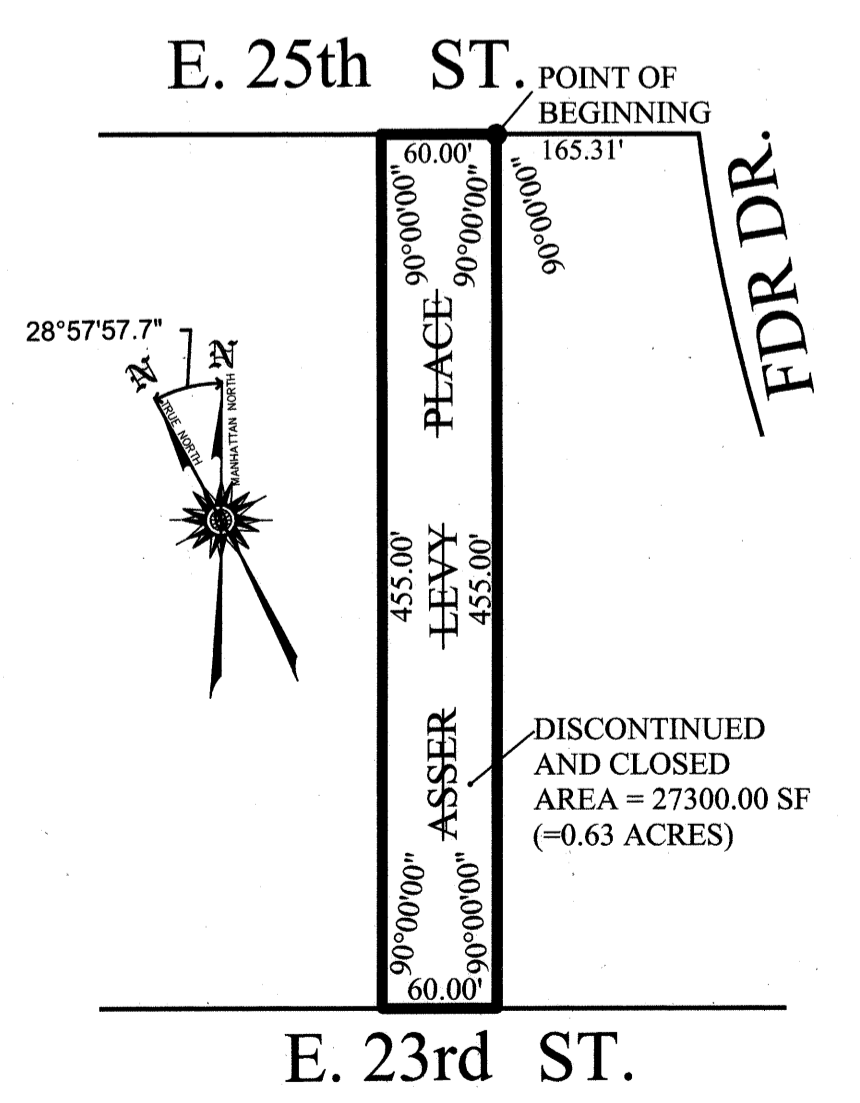
Maria Mikolajczyk
MARIA MIKOLAJCZYK, P.E.
CHIEF ENGINEER
CONSULTING ENGINEER OF THE
BOROUGH OF MANHATTAN

DATED: January 3, 2013

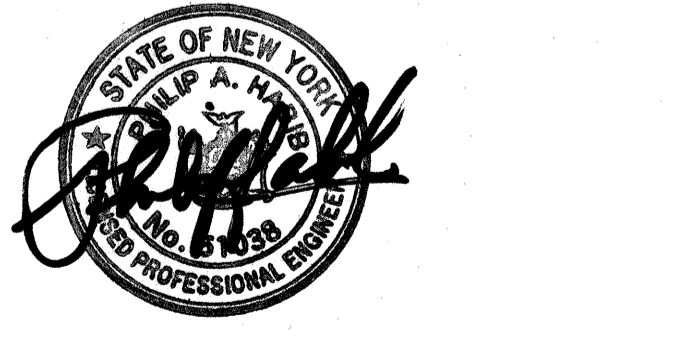


REFERENCE MAPS

B.P. ACC. MAP NO.	(D.C.P. NO.)	DATED
27806		September 25, 1939
28026		August 7, 1940
28141		June 5, 1941
29320		December 6, 1945
28659		February 6, 1946
28714	CP-7576	June 19, 1946
28990		June 15, 1949
29074		November 24, 1950



DISCONTINUANCE AND CLOSING MAP
ASSER LEVY PLACE
BETWEEN EAST 23RD STREET AND EAST 25TH STREET
(NOT TO SCALE)



GEOMETRY SHOWN ON THIS DRAWING HAS BEEN CERTIFIED BY:

PHILIP HABIB & ASSOCIATES
102 MADISON AVENUE, 11TH FL
NEW YORK, NY 10016

AND BASED ON A SURVEY PREPARED BY
GALLAS SURVEYING GROUP, ON AUGUST 3, 2011
(GREGORY S. GALLAS NEW YORK LS, NO 50124)