

REFERENCE MAPS
 BOROUGH PRESIDENT FINAL SECTION MAPS: 117, 118

B.P. MAP NO. (D.C.P. NO.)
 Z-2651 (C00065MMK)
 W-1748 (CP-18477)

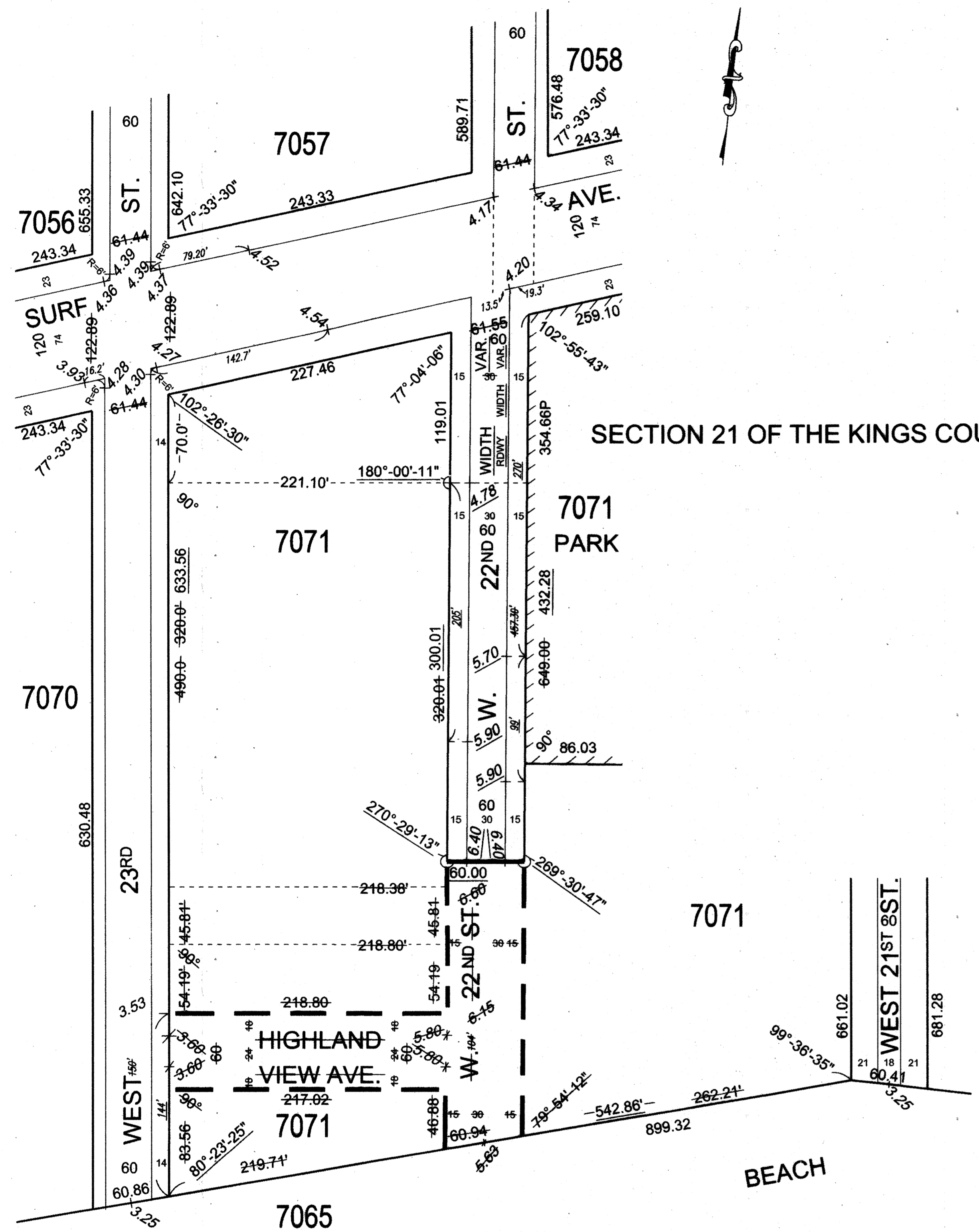
L-616
 L-615
 L-597
 L569
 L-564
 L-560
 L-520
 G-563
 G-527
 L-387

LEGEND

- Indicates street or public beach line heretofore established and hereby retained.
- Indicates street line hereby established.
- Indicates street line heretofore established and hereby eliminated.
- Indicates roadway and sidewalk treatment line hereby established or heretofore established and hereby retained.
- 60.86 Indicates dimension heretofore established and hereby retained.
- ~~649.00~~ Indicates dimension heretofore established and hereby eliminated.
- 633.56 Indicates dimension hereby established.
- 221.10' Indicates block offset or block tie-in dimension heretofore established and hereby retained.
- 218.00' Indicates block offset or block tie-in dimension heretofore established and hereby eliminated.
- 542.86' Indicates block offset or block tie-in dimension hereby established.
- 3.53 Indicates elevation heretofore established and hereby retained.
- ~~5.00~~ Indicates elevation heretofore established and hereby eliminated.
- 4.78 Indicates elevation hereby established.
- 79.20' Indicates tie-in distance (to an elevation) heretofore established and hereby retained.
- 144' Indicates tie-in distance (to an elevation) hereby established.
- ~~156'~~ Indicates tie-in distance (to an elevation) heretofore established and hereby eliminated.
- 15 Indicates roadway and sidewalk treatment dimension heretofore established and hereby retained.
- ~~15~~ Indicates roadway and sidewalk treatment dimension heretofore established and hereby eliminated.
- Indicates roadway and sidewalk treatment dimension hereby established.
- PARK Indicates Park heretofore established and hereby retained.

Elevations apply to top of curb unless otherwise indicated.
 Elevations refer to Brooklyn Borough Highway Datum which is 2.56 feet above the U.S.C. & G.S Datum at Sandy Hook, N.J.

Theoretical curb lines are shown for locating and computing legal grade only.
 Actual curbs are those determined by the Department of Transportation, and may be different.



SECTION 21 OF THE KINGS COUNTY LAND MAP

I, **YVETTE V. GRUEL**, SECRETARY OF THE CITY PLANNING COMMISSION, DO HEREBY CERTIFY THAT THIS MAP IS ONE OF SEVEN SIMILAR MAPS APPROVED BY THE CITY PLANNING COMMISSION ON THE 17TH DAY OF **JUNE, 2009** (CAL. NO. **14**), AND SUBSEQUENTLY APPROVED BY THE CITY COUNCIL ON **JULY 29, 2009** (RES. NO. **2138**), REVISED ON **DECEMBER 4, 2013** AND SUBSEQUENTLY APPROVED BY THE CITY PLANNING COMMISSION ON THE 4TH DAY OF **DECEMBER, 2013** (CAL. NO. **14**) AND SUBSEQUENTLY APPROVED BY THE CITY COUNCIL ON **DECEMBER 19, 2013** (RES. NO. **2110**) WHICH ACTION COMPRISED FINAL APPROVAL, AND THAT THIS MAP WAS FILED ON THE DATE OF THIS CERTIFICATION AND WILL TAKE EFFECT ON THE FOLLOWING DAY.

DATE: NEW YORK *May 19, 2014*

Yvette V. Gruel
 SECRETARY, CITY PLANNING COMMISSION

CITY OF NEW YORK
 BOROUGH OF BROOKLYN
 OFFICE OF THE PRESIDENT
 TOPOGRAPHICAL BUREAU

MAP NO. X-2739

SHOWING A CHANGE IN THE CITY MAP

BY ELIMINATING

HIGHLAND VIEW AVENUE
 BETWEEN WEST 23RD STREET AND WEST 22ND STREET

AND

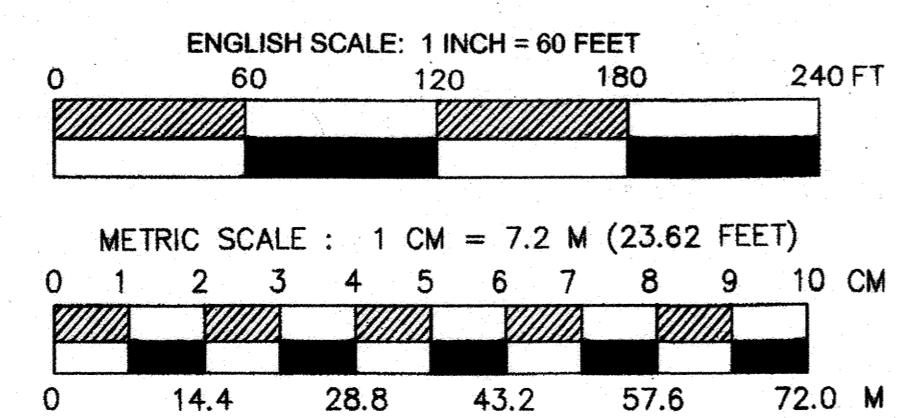
A PORTION OF WEST 22ND STREET
 BETWEEN PUBLIC BEACH AND SURF AVENUE

AND

BY MODIFYING AND ADJUSTING BLOCK DIMENSIONS

ALL WITHIN AN AREA GENERALLY BOUNDED BY SURF AVENUE,
 WEST 23RD STREET, PUBLIC BEACH AND WEST 22ND STREET

DATED: AUGUST 16, 2013

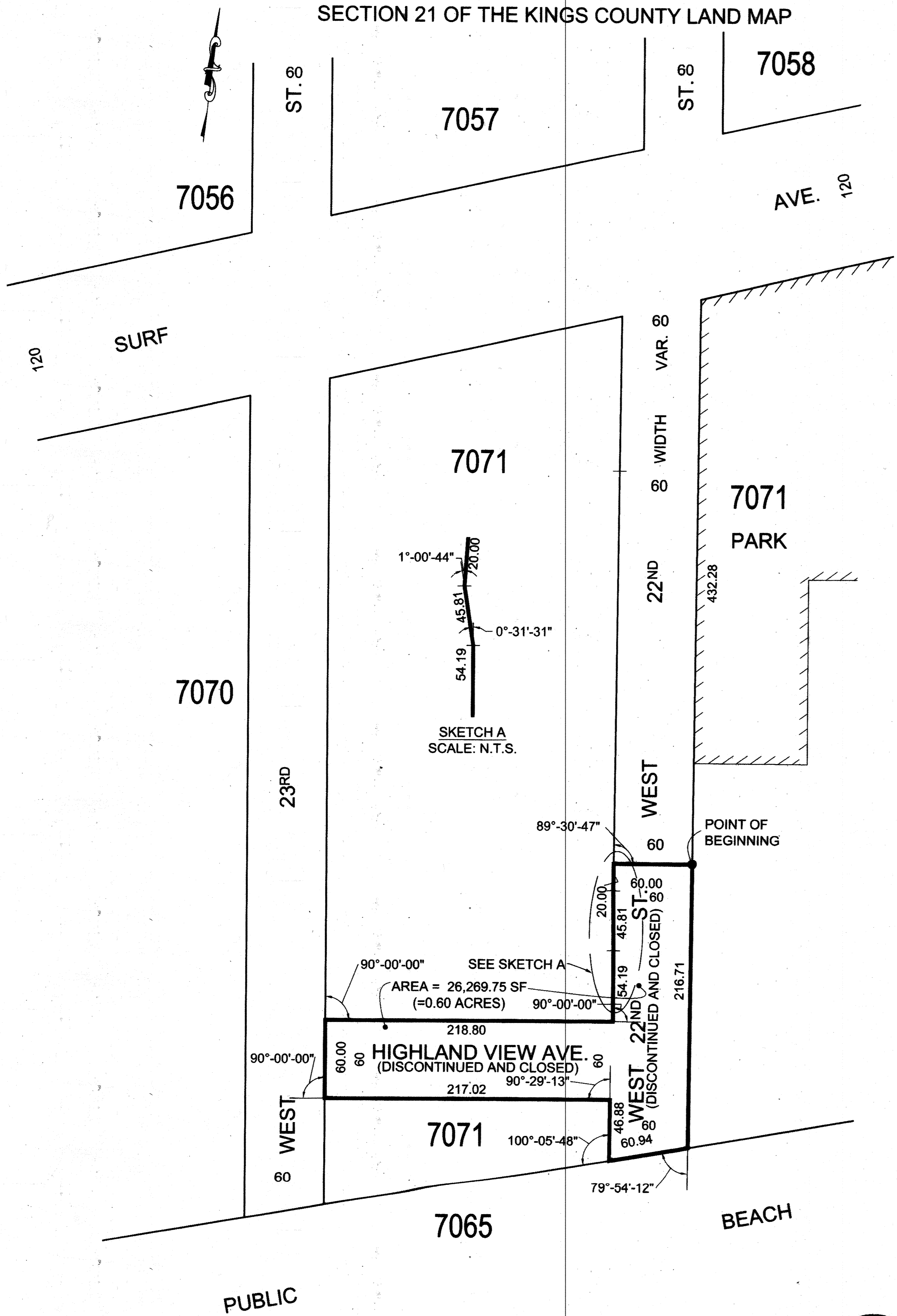


PREPARED BY: **PHILIP HABIB & ASSOCIATES**
 102 MADISON AVENUE, 11TH FL
 NEW YORK, NY 10016






[Signature] PRESIDENT - BOROUGH OF BROOKLYN
[Signature] CHIEF ENGINEER

SECTION 21 OF THE KINGS COUNTY LAND MAP



LEGEND

-  Indicates line of street or public beach heretofore established.
-  (DISCONTINUED AND CLOSED) Indicates street area to be discontinued and closed.
-  PARK Indicates park heretofore established.

I, YVETTE V. GRUEL, SECRETARY OF THE CITY PLANNING COMMISSION, DO HEREBY CERTIFY THAT THIS MAP IS ONE OF SEVEN SIMILAR MAPS APPROVED BY THE CITY PLANNING COMMISSION ON THE 17TH DAY OF JUNE, 2009 (CAL. NO. 14), APPROVED BY THE CITY COUNCIL ON JULY 29, 2009 (RES. NO. 2138), REVISED ON DECEMBER 4, 2013 AND SUBSEQUENTLY APPROVED BY THE CITY PLANNING COMMISSION ON THE 4TH DAY OF DECEMBER, 2013 (CAL. NO. 14), AND SUBSEQUENTLY APPROVED BY THE CITY COUNCIL ON DECEMBER 19, 2013 (RES. NO. 2110) WHICH ACTION COMPRISED FINAL APPROVAL, AND THAT THIS MAP WAS FILED ON THE DATE OF THIS CERTIFICATION AND WILL TAKE EFFECT ON THE FOLLOWING DAY.

DATE: NEW YORK May 19, 2014

Yvette V. Gruel
SECRETARY, CITY PLANNING COMMISSION

CITY OF NEW YORK
BOROUGH OF BROOKLYN
OFFICE OF THE PRESIDENT
TOPOGRAPHICAL BUREAU

MAP NO. X-2711

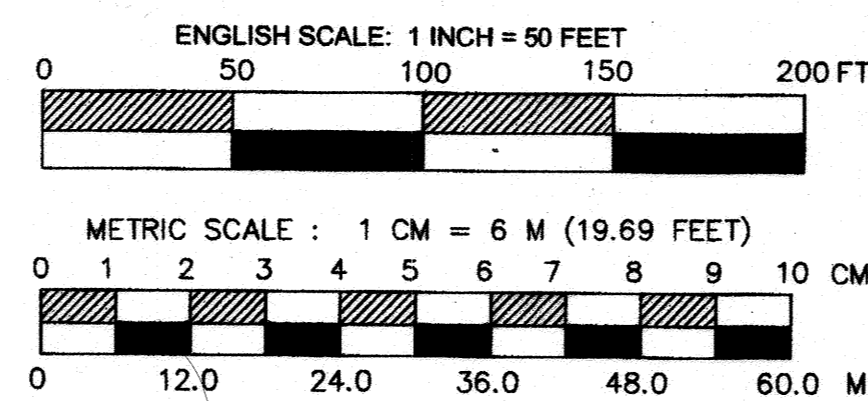
SHOWING

THE DISCONTINUANCE AND CLOSING OF

HIGHLAND VIEW AVENUE
FROM WEST 23RD STREET TO WEST 22ND STREET

AND

A PORTION OF WEST 22ND STREET
BETWEEN SURF AVENUE AND PUBLIC BEACH



CHECKED BY: KO
REVIEWED BY: f.s.c.

PREPARED BY: PHILIP HABIB & ASSOCIATES
102 MADISON AVENUE, 11TH FL
NEW YORK, NY 10016



DATED: JANUARY 14, 2009
REVISED: JUNE 17, 2009
REVISED: AUGUST 16, 2013

[Signature]
PRESIDENT - BOROUGH OF BROOKLYN

[Signature] P.E.
CHIEF ENGINEER